

# THE Patchogue

HOTEL

Main and Maple  
(opp. Post Office)

GRover 5-0800

PARTIES

CONVENTIONS

WEDDINGS

BANQUETS

DANCES

FORUMS

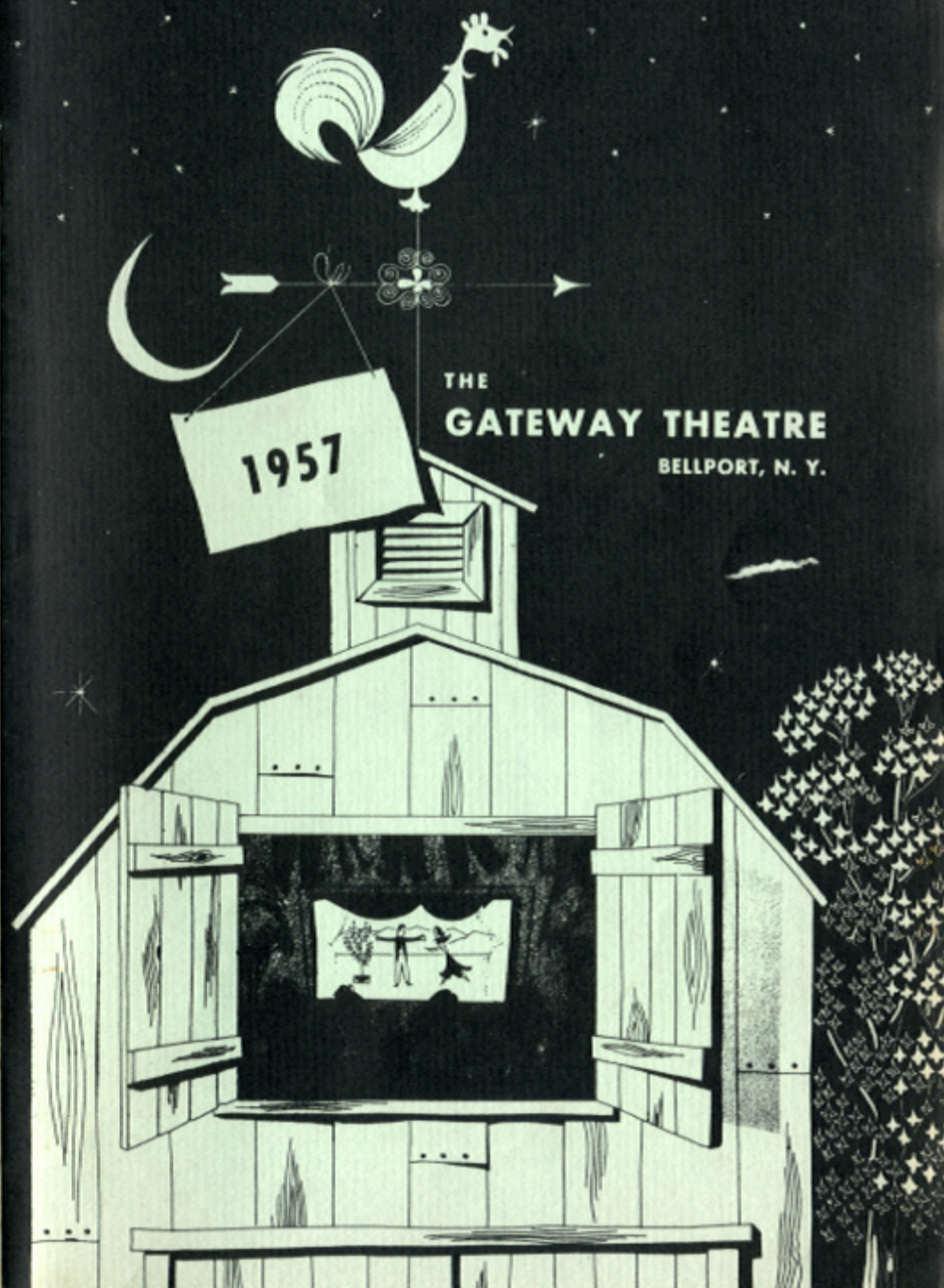


*Formal Gracious Dining  
in Air Conditioned Comfort*

*After Theatre  
Visit the Harlequin Room's  
Cocktail Lounge*

We invite you to investigate, first-hand, the hotel's impressive facilities... two fully equipped ballrooms, two fashionable dining halls, a luxurious cocktail lounge... handsome, spacious room accommodations, each with private bath... private parking for 500 cars. And for superlative food... consistent, perceptive and never ending service... and delightful surroundings... there is no place like the Patchogue Hotel in the very heart of Suffolk County.

*Long Island's Finest Catering Accommodations*



THE  
GATEWAY THEATRE

BELLPORT, N. Y.

"Say you saw it in the Gateway Theatre Play-bill!"



**THE BEST PERFORMANCE**

**LIVE BETTER Electrically**

*Smart moderns know that electricity is best & costs less*

**THE PATCHOGUE ELECTRIC LIGHT CO.**  
*Serving Southern Suffolk Since 1886*

# CasaBasso

Westhampton 4-1341

Westhampton

NEW YORK

AIR SEA

*"For Travelers of Discriminating Taste"*

## SOUTH SHORE TRAVEL BUREAU

Hotels Cruises Tours

No Extra Charge For Our Service  
GROVER 5-0685

HAROLD C. SCHAEFER — AUTH. & BONDED AGENT  
401 E. MAIN ST., E. PATCHOGUE  
(Opp. T. & S. Lumber Co.)

RAIL BUS

"Our advertisers are progressive merchants — patronize them"

## the gateway theatre

bellport, new york

BEllport 7-0578



WHERE ARE WE GOING AS AUDIENCE IN BELLPORT  
THIS SEASON?

**THE THEATRE:** We sit around the arena on which will be imaged forth myriad scenes. Perhaps some will be quite familiar, some quite foreign, but all quite emphatic; some too emphatic. What is here painted, be it a sunlit penthouse apartment, a ranch on the broad expanse of the west, or the olive drab color of the office, each is distinct, each the picture of reality.

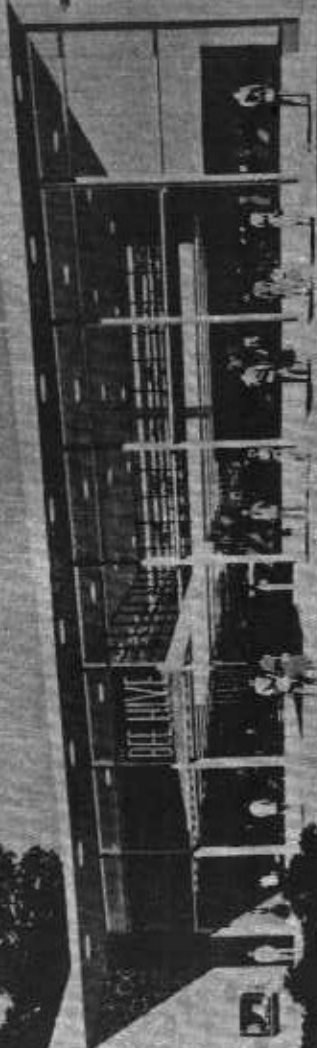
**THE ACTORS** on parade in these trappings represent ideas, colored, illumined, and objectified by playwright, director, and actor. These ideas conceived in thought have been born to that playwright who best sees the need for the fulfillment of these ideas. Victor Hugo once said "There is nothing in this world so powerful as an idea whose time has come".

**THE IDEAS** conceived in the minds of our playwrights today reflect, as they did through all ages, the life around them, and their comment on it. If this view is seen with a twinkle in the eye, the idea is called a comedy. If life presents problems unsurmountable by the human man, the idea becomes a drama, or even a tragedy. Ideas representing life in our theatre of 1957 show man as confused, jealous, frustrated, enigmatic, blind as a mortal seems to be, but on the whole, contented, seeking and able to get by with a smile and a song.

**LANGUAGE** used in today's theatre perhaps seems more coarse than usual, and character relations are exposed in not the most subtle manner. But one who knows theatre and history is aware that these same ideas have been expressed in a manner parallel to the times from Shakespeare on down. If we seem to be shocked by the mirror before us, let us do something to change the image before the glass.

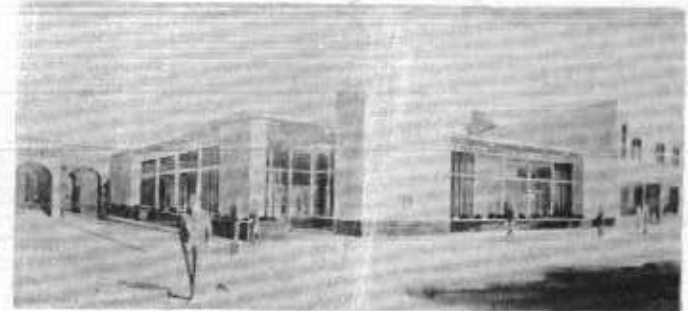
*the* **BEE HIVE**  
"DESIGNED FOR SUFFOLK LIVING"  
PATCHOGUE, N. Y.

"The Ultimate in Shopping Convenience"



"Say you saw it in the Gateway Theatre Play-bill"

## THE PEOPLES NATIONAL BANK OF PATCHOGUE



EAST MAIN STREET

PATCHOGUE, N. Y.

**CORDIALLY INVITES YOUR ACCOUNT**  
NEW BANK BUILDING FEATURES

DRIVE-IN DEPOSIT WINDOW — EASY PARKING  
MID-ISLAND OFFICE — Route 25, SELDEN, N. Y.

Member Federal Deposit Insurance Corp.

**GATEWAY THEATRE** is Long Island's only arena summer theatre with a resident company of Equity players.

Each week Gateway's professional casts will portray the best to be found in to-day's contemporary classics, fresh from the pens of our most popular playwrights and successful Broadway openings.

In conjunction with the theatre Gateway conducts a nationally known Apprenticeship School and student workshop for non-professionals. Daily classes are conducted in all phases of drama and dance by Gateway's faculty of instructors. Student productions are given on July 28th and on August 24th and 25th to which the public is invited.

Gateway welcomes your support as a patron, actor, backstage worker, publicity or as a contributor to our prop and costume rooms—in the furtherance of our goal "Good theatre a cultural outlet".

FOR PLAY INFORMATION TUNE WAPC 1580 RADIO

*Pontiac*



"Ride with Pride"

**SOUTH BAY PONTIAC MOTORS Inc.**

*Big Car Luxury at a Home Town Price*

252 E. Main St.  
PATCHOGUE, N. Y.

*Excellent Service*

GRover 5-0533

*Late Model Used Cars*

"The progressive businesses in this program give the best values"

# SWEZEY FUEL CO.

## Fuel Oils

Rider Avenue  
PATCHOGUE, N. Y.  
GRover 5-0270

Beach Street  
PORT JEFFERSON, N. Y.  
PORT Jefferson 8-0555



Oil Burners - Heating Systems - Installed and Serviced

## BENJAMIN CHARACH & SON

REAL ESTATE - INSURANCE

6 West Main Street, PATCHOGUE, N. Y. GROVER 5-2000



GRover 5-1830

536 EAST MAIN STREET PATCHOGUE, N.Y.

Formerly Maran Lumber—Open Weekdays 7:30 A.M. to 5 P.M.—Fri. to 8 P.M.

HEADQUARTERS OF OPERATION "Home Improvement"

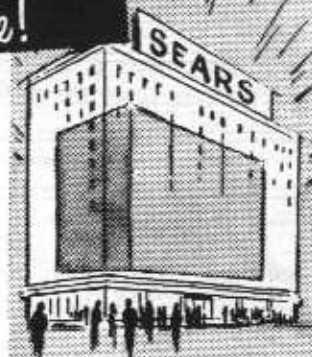
Financing arranged—Construction, Garages, Basements, Improvements



Bellport 7-0079

Emergency Phone  
Bellport 7-0838

Visit the Store  
within a Store!



Is your selection problem unique? Or has your highly individual taste exhausted even Sears well stocked shelves?

Then . . . consult our catalogs, the world's largest selection of usual and unusual merchandise!

## SEARS CATALOG SALES DEPT.

2 Day Delivery

**SEARS, ROEBUCK & CO.**

214 E. Main St. Patchogue, N. Y.

GRover 5-4500

## FOUNDERS OF GATEWAY THEATRE



Sally Laurence



David Sheldon



Ruth Vickers

## WEIDNER-MACKLE AGENCY

Since 1918

REALTORS - INSURORS

Bellport, New York  
Telephone Bellport 7-0700



## JOHN J. ROE & SON

Since 1898

REALTORS - INSURORS

Patchogue, New York  
Tel. GRover 5-4000

"Say you saw it in the Gateway Theatre Play-bill"

# FRANK E. HERMA, II

LICENSED REAL ESTATE & BUSINESS BROKER

Appraiser - Acreage - Homes  
Rentals - Lots

SUNRISE HIGHWAY  
PATCHOGUE

P. O. Box 807

PHONE, EMERSON 3-6313

Open 7 days  
Friday to 9 p. m.



Smart fashions  
needn't be  
expensive  
when you shop at  
.....

## Helen Ann Sanders

Patchogue, L. I. GRover 5-0146

FOR  
Courteous, Prompt Service  
Phone  
BELLport 7-0347



Head of Neck Road  
Bellport, N. Y.

## RIVERHEAD RACEWAY AUTO RACING

Every Wednesday and Saturday Nite 8:30 P. M.  
ADMISSION \$1.25 - Servicemen in Uniform \$1.00 - Children 50c  
FREE PARKING Modern Sanitary Rest Rooms  
Good Food served at our concessions

## WALLEN'S IGA MARKET

GROCERIES - MEATS - VEGETABLES

Bellport's Favorite Food Mart

Main Street BELLport 7-0202



WATCH & CLOCKMAKER  
Fastest Kodak Color Film Service  
139 Main Street Bellport, N. Y.

## SCONZO & SONS ALUMINUM PRODUCTS MFG. CO.

SHOWROOM  
457 E. MAIN STREET  
PATCHOGUE, L. I. GROVER 5-0020

Aluminum Storm Windows  
Venetian Blinds  
Storm Doors  
Jalousies  
Shades

"Our advertisers are progressive merchants — patronize them!"

"Say you saw it in the Gateway Theatre Play-bill"



## Rose Jewelers

DIAMONDS - WATCHES  
SILVER - CHINA AND CRYSTAL

Telephone: GRover 5-1441

Lenox China - Minton China  
and other leading brands

Towle, Gorham, International  
and all other leading brands of Silver

74 EAST MAIN STREET PATCHOGUE, N. Y.

- AAA -

## CLARENCE HAWKINS GARAGE

Immediate Emergency Repairs - Towing  
Courteous Service  
Opp. Post Office BELLport 7-0185

## Gentle's

Patchogue - Port Jefferson  
Coats - Suits  
Dresses - Gowns - Sportswear



MARY WOOLVERTON returns for a fourth glorious summer as one of Gateway's and the area's favorite character actresses. Receiving her professional rating at Gateway, Miss Woolverton starred as Laura Partridge in last season's hit SOLID GOLD CADILLAC. Her characterizations of Mrs. Watty in THE CORN IS GREEN, as Andree in GIGI and Ruth in BLYTHE SPIRIT, will be well remembered by Gateway theatre-goers. Before coming to Gateway she appeared at the Bolton Theatre in London and at the Hedgerow Theatre in Pennsylvania.



MILT COMMONS who was first seen at Gateway as the evil Mr. Snell in SOLID GOLD CADILLAC, which he also directed, reversed his field the next week to reappear as the benevolent Mr. Penny-packer. He continued with various states of pleasantness through RAINMAKER and SABRINA FAIR. Such drastic switches are consistent with the long series of roles ranging from the boy-next-door to a visitor-from-outer-space that Milt has played in his career. His stock credits range literally from Maine to California. In New York he has appeared at the Blackfriars Theatre, and for the past two winters has acted and directed for the Pittsburgh Miniature Theatre.

## SWAN RIVER BOAT YARD

Row Boats For Rent  
Trailers Made To Order  
WELDING Boats Hauled  
GRover 5-0220  
Pine Neck Ave. E. Patchogue

Phone: GRover 5-2993

## AUTHORIZED RADIO & TELEVISION SERVICE

294 East Main St. Patchogue, N. Y.

GRover 5-3165

## CLEAR-VIEW & FIALA, INC.

Paints - Wallpapers - Garden Supplies

197 E. Main St. Patchogue, N. Y.



"For a good product and a good service — patronize our advertisers!"

"Say you saw it in the Gateway Theatre Play-bill"

# TIGHT ROOFS McRAE BROS

Roofing — Siding — Insulation — Aluminum Combination Windows  
GRover 5-4200 HUntington 4-2746 PArk 7-2859 MOhawk 9-1344  
IVanhoe 6-7770 EAst Hampton 4-0212 SOuthampton 1-0113

### ABOUT THE AUTHOR:

Although it is his fourth not first play, the author JEAN ANOUILH was only in his twenty-second year when he wrote "THIEVES CARNIVAL". Produced both in Washington, D. C. and in Greenwich Village, it has not yet reached Broadway. Some of his Plays which have reached the public are ANTI GONE, LEGEND FOR LOVERS, AND THE LARK.

### ABOUT THE DIRECTOR:

GIGI CASCIO winds up his directing assignment at Gateway after creating the first of the season's entertainment, ROCK HUNTER, JANUS, and the dynamic WITNESS FOR THE PROSECUTION. In THIEVES CARNIVAL, he shows his talents as a Director of light high style farce in contrast to the vital force in the last show.

### ROBERT DUVALL

A graduate of the Neighborhood Playhouse, ROBERT DUVALL was first interested in theatre work while attending Principia College in Elmhurst, Ill. He has appeared at the Augusta Civic Theatre, the McClean Theatre in Va., and the Gateway Theatre for two and a half seasons. Such roles as Witchboy in DARK OF THE MOON, Jimmy in THE RAINMAKER, and Harvey Weems in Horton Foote's THE MIDNIGHT CALLER, are among his favorite. Mr. Duvall is a member of Sanford Miesner's professional Workshop and has worked with the mime, Alvin Epstein, a member of Marcel Marceau's Company.

APPRENTICES, the backbone of the theatre, without whose help on lighting, props, sound, carpentry and publicity the theatre could not operate as smoothly, this season are:

JIM MILLS, GENE HACKMAN, NINA DE PALMA, NINA STEIN, ED LYONS, HOWARD FALES, DON GOODYEAR, MIKE TRAPANI, PATTI JUDKOFF, JACKIE READING, ELLEN KAPLAN, BABS ENGEL, RICHARD HERRE, TONI ORTNER.

FOR PLAY INFORMATION  
TUNE IN WPAC - 1580 ON YOUR RADIO DIAL

## SACK'S Stationery 22 EAST MAIN PATCHOGUE,

Our most important product  
is Friendly Courteous Service

Complete Stationery - Toys - Hallmark Greeting Cards

"For a good product and a good service — patronize our advertisers"

"Say you saw it in the Gateway Theatre Play-bill"

## "Patchogue's Finest Furniture Mart" Bert Lansman & Son GRAND RAPIDS FURNITURE

76 West Main Street GRover 5-3848 Patchogue, N. Y.

### THIEVES CARNIVAL

DIRECTED BY GIGI CASCIO by Jean Anouilh DESIGNED BY LES HARRIS  
JULY 23-27, 1957

THIEVES  
PETERBONO ..... MILT COMMONS  
HECTOR ..... ROBERT DUVALL  
GUSTAVE ..... JIM MILLS  
LORD EDGARD ..... RAY BARBATA  
LADY HURF ..... MARY WOOLVERTON

HER NIECES  
EVA ..... NINA DIPALMA  
JULIETTE ..... LIBBY GLENN  
DUPONT-DUFORT Sr. .... ED SPENCER  
DUPONT-DUFORT Jr. .... BOB DAYTON  
TOWN CRIER ..... DON GOODYEAR  
POLICEMEN....JOC COSTELLO, RICHARD HERRE  
NURSEMAID..... NINA STEIN  
A CHILD..... MIO AMRINE  
MUSICIAN ..... GIGI CASCIO

ACT ONE - THE PUBLIC GARDENS - SUMMER  
ACT TWO - LADY HURF'S DRAWING ROOM - EVENING  
ACT THREE - THE SAME  
ACT FOUR - THE CONSERVATORY - AN HOUR LATER

COMING ATTRACTION  
JULY 30th to AUG. 3rd  
Arthur Miller's Dynamic Play  
**View From The Bridge**  
SPECIAL THEATRE PARTY DISCOUNTS  
MAKE RESERVATIONS NOW!

89 E. MAIN ST. PHONE  
PATCHOGUE, L. I. GROVER 5-0136

*Blums*

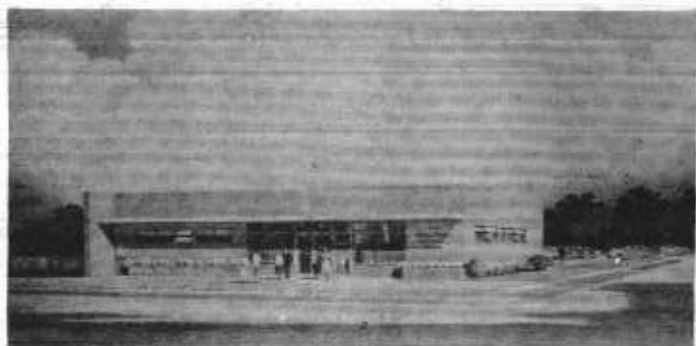
Headquarters for  
Jantzen Swim Suits and Playwear  
Rose Marie Reid—Catalina  
Swim Suits

"Our advertisers are progressive merchants — patronize them"

"Say you saw it in the Gateway Theatre Play-bill!"

# The Bellport National Bank

Station Road Bellport, N. Y.  
Open Monday Evening 6:00 to 8:00 p.m.



Convenient Parking - Friendly Service

WHERE YOUR DOLLARS MAKE \$ENSE

Member Federal Deposit Insurance Corp.



ULU GROSBDAR comes to Gateway as director from N.Y.C. where he is head of the Theatre Workshop. He last directed Off-Broadway, Sean O'Casey's *BEDTIME STORY* and John Patrick's

*THE CURIOUS SAVAGE*. He has directed at the Circle Theatre, Chicago; the Fort Bragg Theatre, N. C., and the Teatro Juvenil, Havana, Cuba. Mr. Grosbard studied directing at the Yale Drama School.



LES HARRIS made his first appearance on the Gateway stage in *TEA AND SYMPATHY*. As scene designer, his sets for *PENNY-PACKER*, *RAIN-MAKER*, *I AM A CAMERA* and *T-*

*BACCO ROAD*, will be remembered for their originality. More recently he designed for the Willett Players and designed for *ARMS AND THE MAN* for the Slingerland Theatre.



ISLAND  
COAL & LUMBER  
CORPORATION

GRover 5-3232

Route 112

Medford, N. Y.

"The progressive businesses in this program give the best values!"

"Say you saw it in the Gateway Theatre Play-bill!"

Serve  
**BOHACK'S**  
Deluxe  
**TENDERAY BEEF!**  
Guaranteed  
to be  
Tender!



Bohack buys only U. S. Government-graded prime and choice beef. Then this fine beef is made even better by our famous Tenderay method, developed by Westinghouse and used only by Bohack in the New York area. *Guaranteed to be tender every time!*



The Light  
refreshment

"Patronize our advertisers — they patronize our theatre"

"Say you saw it in the Gateway Theatre Play-bill"



**THE SHERWIN-WILLIAMS Co.**

83 SOUTH OCEAN AVENUE

PATCHOGUE, NEW YORK

*Products*  
Super Kem Tone  
Flat-Tone  
Kem-Glo  
SWP

GRover 5-2757

**THE PATCHOGUE BANK**

47 West Main Street

Patchogue, N. Y.

Member of the Federal Deposit Insurance Corporation

"A Commercial Bank serving ALL your Banking Requirements"

3% Paid on Savings Accounts  
Open Friday Evening 6:30 to 8:00



**LIBBY GLENN** comes to the Gateway stage with a wealth of experience and talent. At the Cleveland Playhouse, she appeared in SEVEN YEAR ITCH, BUS STOP, THE PONDER HEART, LA RONDE and GLASS MENAGERIE. She has been featured at the Barter Theatre, Houston Playhouse, Alley Theatre and The Chataqua Repertory Theatre appearing in such roles as Billie Dawn in BORN YESTERDAY, Liza in PYGMALION, Nina in THE SEAGULL and Celia in VOLPONE. She was educated at Wesleyan and Duke University.



**RAY BARBATA** will be remembered by Gateway audiences for his impressionable roles in TEA AND SYMPATHY, DIAL M FOR MURDER, SOLID GOLD CADILLAC, and TENDER TRAP. This is Mr. Barbata's fifth season of Summer Stock, having been with the Nisswa Summer Theatre in Minnesota for 2 seasons and with the Barn Theatre in Kalamazoo, Mich., where he scored in GUYS AND DOLLS and CAINE MUTINY. While in the Army, he played in a Signal Corps film and toured the U. S. and Canada in Special Service productions. During the past winter Ray has been active with the International Lyric Org., has appeared on Omnibus, and with Sibhan McKenna in ST. JOAN.

**W. R. HAYMAN'S AUTO SALES**

ENGLISH BUILT  
**FORD**

ANGELIA - CONSUL

*Authorized Triumph Dealer*

283 East Main Street  
PATCHOGUE, N. Y.

GR 5-0958

**MALETTA'S, INC.**

TV \* APPLIANCES \* HI-FI

MAGNAVOX - HOT POINT

NECCHI SEWING MACHINES

210 Medford Ave.  
Patchogue, N.Y.

GRover 5-0940  
0053

GRover 5-9769 11 A. M. to Midnight

**樓 珍 寶**

**PATCHOGUE ROYAL RESTAURANT**

Real Cantonese Dishes & Family Dinner  
Wines and Liquors - Air Conditioned

68 West Main St. Patchogue

**MORLEY'S FLOWERS**

Flowers for All Occasions

Member Florist Telegraph Del. Ser.

Tel. GRover 5-1980 Patchogue

"Say you saw it in the Gateway Theatre Play-bill"

For Gracious Dining  
**The Gateway**  
presents



*The*  
**Better Ole**

*Delightful Dining - Continental Cuisine*

Air Conditioned Rooms

Dancing Saturday Nights

Open After Theatre - Closed Tuesdays

*Recommended by Cue - Gourmet - Esquire & Diner's Club*

SO. COUNTRY RD., BROOKHAVEN BELLport 7-0568



**BRONCO CHARLIE'S**  
ORIGINAL LOG CABIN RESTAURANT

*Steaks - Chops - Seafood*  
*Sauerbraten and Dumplings*

Tel. SAyville 4-1132

Montauk Highway

Oakdale, N. Y.

**Snapper INN**

SHORE DINNERS

Connetquot River Oakdale, L. I.  
SAyville 4-0248

**THE LINDENMERE**

Otto & Marie Amende CM 3-0553

*Continental Cuisine*  
*Modified American Plan*

Dining Room overlooking the Water  
Sedgemere Rd. Center Moriches

**Deli - King**

*The Best Hot Corned Beef*  
*and Hot Pastrami Sandwich*  
*in Suffolk County*

85 W MAIN STREET GRover 5-9744  
PATCHOGUE, N. Y.

**THE SHOREHAM**

"since 1903"

RESTAURANT

*"On the Great South Bay"*

Shore Dinners Sea Food  
Foot of Foster Ave. SAyville 4-0060

*"A Good Place to Eat - Where Old Friends Meet"*



On Montauk Highway E. Patchogue



*Bellport's Finest Restaurant*  
*and Cocktail Bar*

**IRON HORSE INN**

108 So. Country Rd. BELLport 7-0556  
Steaks, Chops & Fresh Sea Food

"Gateway Theatre recommends the merchants and services advertised here"



**DENNIS MAUD TREE EXPERT CO.**

COMPLETE TREE SERVICE Diagnosis Without Charge  
 \* Pruning \* Fertilizing \* Tree Removal  
 \* Spraying \* Tree Surgery \* Tree Moving \* Poison Ivy Control  
 615 E. Main St. GRover 5-1233 Patchogue, L. I.  
 2880

**ZEIDLER MOTORS** GRover 5-2345

Rt. 112  
 MEDFORD, NEW YORK  
 Renault - Volvo  
  
 CARS & TRUCKS

*Richard York*

OF PATCHOGUE  
 "Your Red Cross Shoe Store"  
 14-22 So. Ocean Ave.  
 Tel. GRover 5-1047 Patchogue

Tel. GRover 5-2531

**STANLEY'S**  
 — Bedding and Furniture Co. —  
 Juvenile · Carpets · Novelties  
 44 East Main St. Patchogue, N. Y.



**QUALITY BAKERY**  
 South Country Road  
 Montauk Highway  
 East Patchogue, N. Y.

GRover 3-2538

**GUTTE, INC.**  
 Largest Hardware Store in  
 Suffolk County  
 17 West Main St. Patchogue, N. Y.

**BOB RITCHIE BOAT YARD**  
 Marine Supplies - Storage  
 Custom Skiffs - Cruisers, Inc.  
 Boats  
 Little Dude Trailers  
 168 West Ave. Patchogue, N. Y.  
 Tel. GRover 5-1609

GRover 5-9881

**CASSEL G.M.C. TRUCK SALES**  
 Authorized Dealer  
 SALES - SERVICE - PARTS  
 188 Medford Ave. Patchogue, N. Y.

*Jet* **2 HOUR Cleaners**  
 466 E. MAIN ST.  
 (OPPOSITE SAFEWAY) Patchogue



392 E. Main St. Patchogue, N. Y.

Visit our new Showrooms  
 Featuring  
 Complete Kitchen Displays  
 See the Latest Building Products

**THE UNION SAVINGS BANK**

OF PATCHOGUE, NEW YORK

"at the Corner of So. Ocean and Church"

The Family Bank For All The Family.

The Only Savings Bank in Brookhaven Town.

For your convenience we are open Friday evenings from 6:30 to 8 P. M. Member: F.D.I.C.

*Geza Adam, Inc.*

HANDBAGS · LUGGAGE · GIFT ITEMS

The Finest In Leather Goods

Lake Ronkonkoma  
 146 EAST MAIN STREET  
 PATCHOGUE, N. Y.  
 ROnk. 9-8621 TEL. ATLANTIC 9-0550

GRover 5-2002

**KALLER'S JEWELERS**  
 Patchogue's Oldest Jeweler  
 with a complete Repair Shop  
 Diamonds · Watches · Silverware  
 30 E. Main St. Patchogue, N. Y.



**FRANK ALBRIGHT**, a member of Gateway's faculty, is director of speech activities in West Haven Conn. School system and active in the American Educational Theatre Assoc. He has many years of experience at such leading theatres as Cape May Summer Theatre and has spent 20 years in educational theatre in New Mexico, Oklahoma, Colorado and Connecticut. After 3 years at Gateway as technical director, set and costume designer, Mr. Albright will be this season's director of apprentices.



**JOHN COSTELLO**, Gateway's primitive dance teacher, was seen last summer in BUS STOP and RAINMAKER. He has toured two seasons in such Children's Theatre productions as ALICE IN WONDERLAND, PETER AND THE WOLF and the NUTCRACKER SUITE. He appeared for 3 months at the Cherry Lane Theatre in Picasso's DESIRE TRAPPED BY THE TAIL and for 4 months at the Cabaret Theatre in New Orleans in THE DRUNKARD. He has studied dance with Charles Weidman and Katherine Dunham.

*The Pink Cottage*

**GIFTS**

"Come in and Browse Around"

SOUTH COUNTRY ROAD EAST PATCHOGUE,

GRover 5-0372

'56 FORD



PATCHOGUE MOTORS, INC.

Tel. GRover 5-1133  
 501 medFORD Ave. Patchogue

**PATCHOGUE ESTATES INC.**

FRANK SILVERMAN, President

161 Oak St.

Patchogue, N. Y.

"Patronize our advertisers — they patronize our theatre"

